

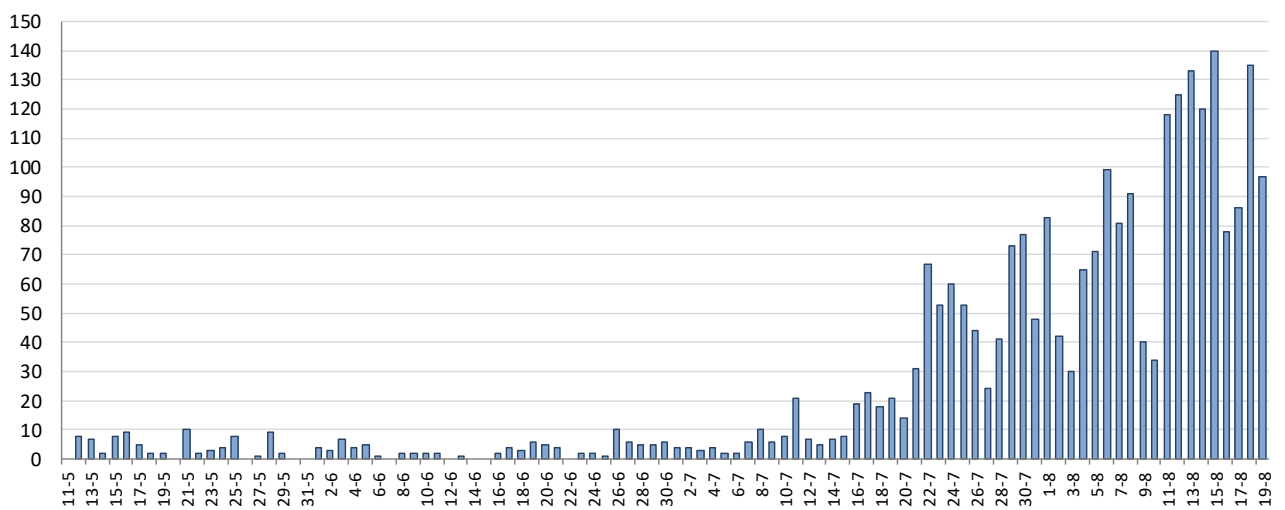


INFORME EPIDEMIOLÓGICO DIARIO COVID19 EN LA REGIÓN DE MURCIA 20 de agosto de 2020

En la Región de Murcia hasta la fecha se han diagnosticado 5831 casos de COVID-19. Los casos activos actualmente son 1674. Se encuentran hospitalizados 106 pacientes y de ellos, 15 en la UCI. El número total de fallecidos es de 155.

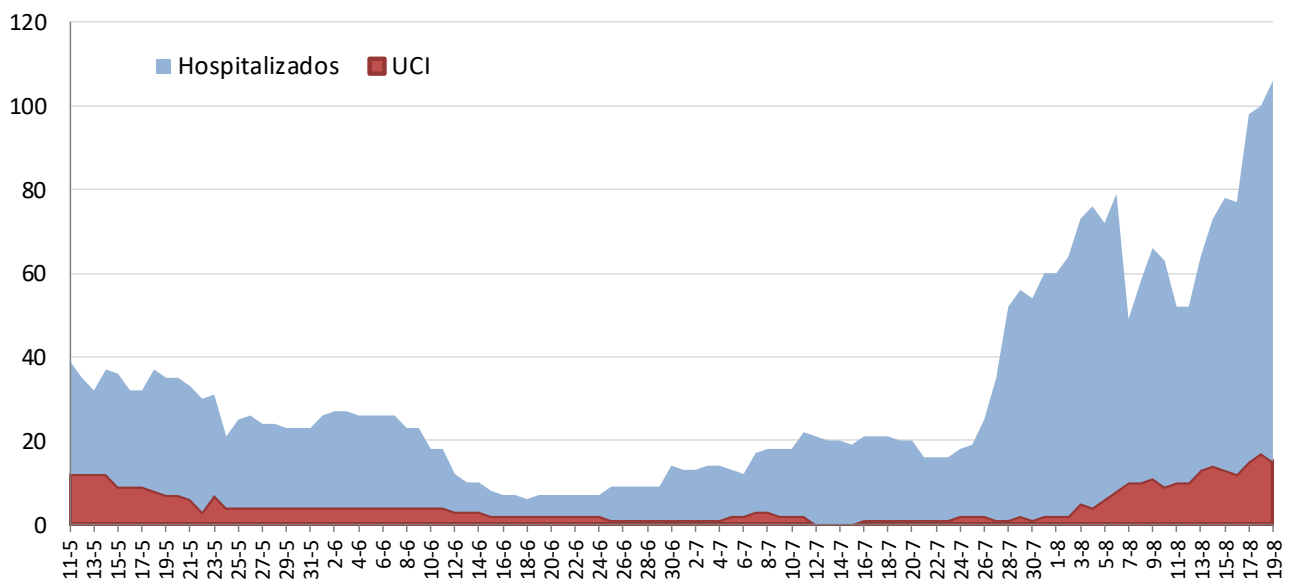
En las figuras se presentan los datos epidemiológicos desde el 11/05/2020 y en las tablas de todo el periodo.

Figura 1. Número de casos confirmados COVID-19 desde el 11 de mayo por fecha de notificación. Región de Murcia.



Fuente: Servicio de Epidemiología. D.G. Salud Pública y Adicciones.

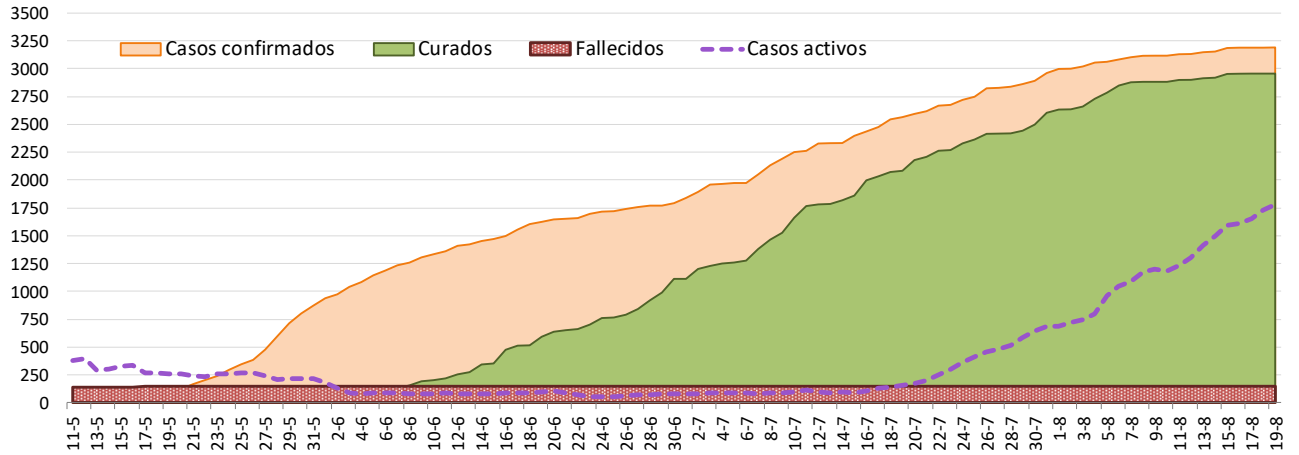
Figura 2. Número de personas que se encuentran hospitalizadas y en UCI diarias por COVID-19 (prevalencia) desde el 11 de mayo. Región de Murcia.



Fuente: Servicio de Epidemiología. D.G. Salud Pública y Adicciones.

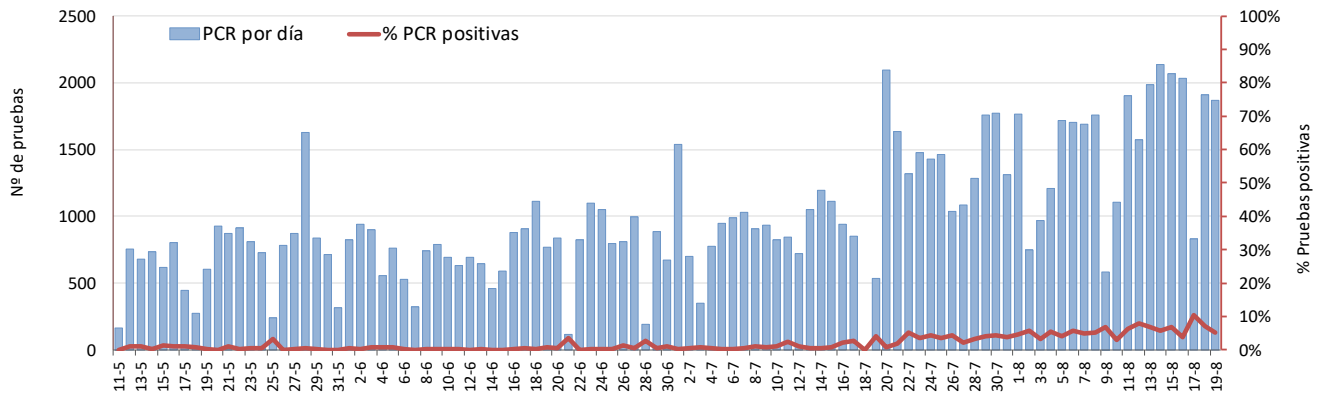


Figura 3. Número de casos confirmados, alta epidemiológica (curados) y fallecidos acumulados COVID19 desde el 11 de mayo. Región de Murcia.



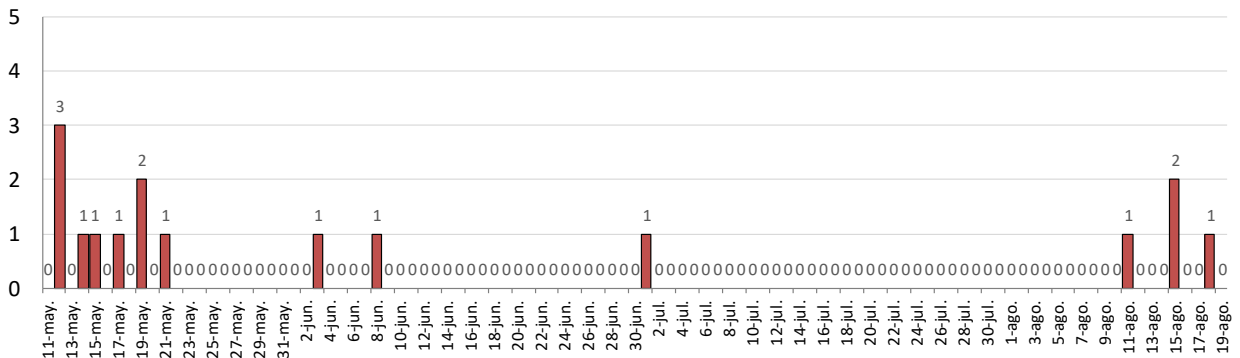
Fuente: Servicio de Epidemiología. D.G. Salud Pública y Adicciones.

Figura 4. Número de pruebas PCR diarias COVID-19 desde el 11 de mayo. Región de Murcia.



Fuente: Servicio de Epidemiología. D.G. Salud Pública y Adicciones.

Figura 5. Número de fallecidos COVID-19 desde el 11 de mayo confirmados por fecha de defunción. Región de Murcia.



Fuente: Servicio de Epidemiología. D.G. Salud Pública y Adicciones.



Tabla 1. Casos confirmados COVID19 por municipio de residencia.¹ Región de Murcia

| Municipio | Población | Casos | % Total casos | IA* | Casos PCR+ últ.14 días | | Casos PCR+ con FIS ult. 14 días | | Casos PCR+ últ. 7 días | | Casos PCR+ con FIS ult. 7 días | |
|---------------------------|----------------|-------------|---------------|--------------|------------------------|-------------|---------------------------------|-------------|------------------------|-------------|--------------------------------|------------|
| | | | | | Casos | IA* | Casos | IA* | Casos | IA* | Casos | IA* |
| Abanilla | 6127 | 86 | 1.5% | 1403.6 | 0 | 0.0 | 0 | 0.0 | 0 | 0.0 | 0 | 0.0 |
| Abarán | 12964 | 35 | 0.6% | 270.0 | 7 | 54.0 | 1 | 7.7 | 6 | 46.3 | 0 | 0.0 |
| Aguilas | 35301 | 34 | 0.6% | 96.3 | 1 | 2.8 | 1 | 2.8 | 0 | 0.0 | 0 | 0.0 |
| Albudeite | 1373 | 2 | 0.0% | 145.7 | 0 | 0.0 | 0 | 0.0 | 0 | 0.0 | 0 | 0.0 |
| Alcantarilla | 42048 | 101 | 1.8% | 240.2 | 21 | 49.9 | 14 | 33.3 | 14 | 33.3 | 4 | 9.5 |
| Alcázares (Los) | 16138 | 38 | 0.7% | 235.5 | 5 | 31.0 | 3 | 18.6 | 3 | 18.6 | 0 | 0.0 |
| Aledo | 1022 | 3 | 0.1% | 293.5 | 0 | 0.0 | 0 | 0.0 | 0 | 0.0 | 0 | 0.0 |
| Alguazas | 9638 | 53 | 0.9% | 549.9 | 23 | 238.6 | 6 | 62.3 | 17 | 176.4 | 1 | 10.4 |
| Alhama de Murcia | 22077 | 59 | 1.0% | 267.2 | 21 | 95.1 | 9 | 40.8 | 8 | 36.2 | 1 | 4.5 |
| Archena | 19301 | 54 | 0.9% | 279.8 | 6 | 31.1 | 1 | 5.2 | 2 | 10.4 | 0 | 0.0 |
| Beniel | 11318 | 33 | 0.6% | 291.6 | 8 | 70.7 | 3 | 26.5 | 2 | 17.7 | 0 | 0.0 |
| Blanca | 6539 | 12 | 0.2% | 183.5 | 6 | 91.8 | 3 | 45.9 | 4 | 61.2 | 1 | 15.3 |
| Bullas | 11530 | 28 | 0.5% | 242.8 | 1 | 8.7 | 0 | 0.0 | 1 | 8.7 | 0 | 0.0 |
| Calasparra | 10178 | 69 | 1.2% | 677.9 | 3 | 29.5 | 3 | 29.5 | 3 | 29.5 | 1 | 9.8 |
| Campos del Río | 2028 | 2 | 0.0% | 98.6 | 0 | 0.0 | 0 | 0.0 | 0 | 0.0 | 0 | 0.0 |
| Caravaca de la Cruz | 25760 | 61 | 1.1% | 236.8 | 8 | 31.1 | 6 | 23.3 | 7 | 27.2 | 2 | 7.8 |
| Cartagena | 214802 | 734 | 12.7% | 341.7 | 148 | 68.9 | 68 | 31.7 | 77 | 35.8 | 19 | 8.8 |
| Cehegín | 14983 | 31 | 0.5% | 206.9 | 2 | 13.3 | 0 | 0.0 | 2 | 13.3 | 0 | 0.0 |
| Ceutí | 11787 | 22 | 0.4% | 186.6 | 2 | 17.0 | 1 | 8.5 | 0 | 0.0 | 0 | 0.0 |
| Cieza | 34988 | 124 | 2.2% | 354.4 | 9 | 25.7 | 5 | 14.3 | 6 | 17.1 | 0 | 0.0 |
| Fortuna | 10112 | 29 | 0.5% | 286.8 | 4 | 39.6 | 1 | 9.9 | 3 | 29.7 | 1 | 9.9 |
| Fuente Álamo de Murcia | 16583 | 28 | 0.5% | 168.8 | 12 | 72.4 | 8 | 48.2 | 8 | 48.2 | 1 | 6.0 |
| Jumilla | 25600 | 90 | 1.6% | 351.6 | 23 | 89.8 | 10 | 39.1 | 5 | 19.5 | 1 | 3.9 |
| Librilla | 5305 | 4 | 0.1% | 75.4 | 1 | 18.9 | 0 | 0.0 | 0 | 0.0 | 0 | 0.0 |
| Lorca | 94404 | 445 | 7.7% | 471.4 | 206 | 218.2 | 93 | 98.5 | 102 | 108.0 | 19 | 20.1 |
| Lorquí | 7141 | 17 | 0.3% | 238.1 | 0 | 0.0 | 0 | 0.0 | 0 | 0.0 | 0 | 0.0 |
| Mazarrón | 32209 | 182 | 3.2% | 565.1 | 30 | 93.1 | 11 | 34.2 | 10 | 31.0 | 5 | 15.5 |
| Molina de Segura | 71890 | 282 | 4.9% | 392.3 | 51 | 70.9 | 26 | 36.2 | 31 | 43.1 | 7 | 9.7 |
| Moratalla | 7839 | 19 | 0.3% | 242.4 | 3 | 38.3 | 1 | 12.8 | 1 | 12.8 | 0 | 0.0 |
| Mula | 16883 | 58 | 1.0% | 343.5 | 24 | 142.2 | 5 | 29.6 | 14 | 82.9 | 3 | 17.8 |
| Murcia | 453258 | 2005 | 34.8% | 442.4 | 393 | 86.7 | 213 | 47.0 | 174 | 38.4 | 53 | 11.7 |
| Ojós | 500 | 1 | 0.0% | 200.0 | 0 | 0.0 | 0 | 0.0 | 0 | 0.0 | 0 | 0.0 |
| Pliego | 3847 | 1 | 0.0% | 26.0 | 0 | 0.0 | 0 | 0.0 | 0 | 0.0 | 0 | 0.0 |
| Puerto Lumbreras | 15394 | 34 | 0.6% | 220.9 | 12 | 78.0 | 5 | 32.5 | 2 | 13.0 | 0 | 0.0 |
| Ricote | 1264 | 2 | 0.0% | 158.2 | 1 | 79.1 | 1 | 79.1 | 0 | 0.0 | 0 | 0.0 |
| San Javier | 32489 | 58 | 1.0% | 178.5 | 4 | 12.3 | 1 | 3.1 | 2 | 6.2 | 0 | 0.0 |
| San Pedro del Pinatar | 25476 | 42 | 0.7% | 164.9 | 6 | 23.6 | 6 | 23.6 | 4 | 15.7 | 1 | 3.9 |
| Santomera | 16206 | 105 | 1.8% | 647.9 | 0 | 0.0 | 0 | 0.0 | 0 | 0.0 | 0 | 0.0 |
| Torre-Pacheco | 35676 | 82 | 1.4% | 229.8 | 18 | 50.5 | 3 | 8.4 | 7 | 19.6 | 0 | 0.0 |
| Torres de Cotillas (Las) | 21471 | 53 | 0.9% | 246.8 | 11 | 51.2 | 4 | 18.6 | 3 | 14.0 | 0 | 0.0 |
| Totana | 32008 | 359 | 6.2% | 1121.6 | 61 | 190.6 | 10 | 31.2 | 20 | 62.5 | 0 | 0.0 |
| Ulea | 874 | 0 | 0.0% | 0.0 | 0 | 0.0 | 0 | 0.0 | 0 | 0.0 | 0 | 0.0 |
| Unión (La) | 20225 | 32 | 0.6% | 158.2 | 2 | 9.9 | 2 | 9.9 | 0 | 0.0 | 0 | 0.0 |
| Villanueva del Río Segura | 2910 | 11 | 0.2% | 378.0 | 3 | 103.1 | 1 | 34.4 | 1 | 34.4 | 0 | 0.0 |
| Yecla | 34432 | 181 | 3.1% | 525.7 | 8 | 23.2 | 0 | 0.0 | 6 | 17.4 | 0 | 0.0 |
| Otras CCAA | | 55 | 1.0% | | 5 | | 3 | | 3 | | 3 | |
| Total | 1493898 | 5757 | 100.0% | 385.4 | 1149 | 77.0 | 528 | 35.4 | 548 | 36.7 | 123 | 8.3 |

1: Con información epidemiológica completa FIS: fecha inicio síntomas *IA: Incidencia acumulada x10⁵ hab.

Fuente: Servicio de Epidemiología, Dirección General de Salud Pública y Adicciones



Tabla 2. Casos confirmados COVID19 por zona básica de residencia.¹ Región de Murcia

| Zona Básica Salud | Población | Casos | IA* | Casos PCR+ últ.14 días | | Casos PCR+ con FIS ult. 14 días | | Casos PCR+ últ. 7 días | | Casos PCR+ con FIS ult. 7 días | |
|--------------------------------|-----------|-------|--------|---------------------------|-------|------------------------------------|-------|---------------------------|-------|-----------------------------------|------|
| | | | | Casos | IA* | Casos | IA* | Casos | IA* | Casos | IA* |
| Abanilla | 6127 | 86 | 1403.6 | 0 | 0.0 | 0 | 0.0 | 0 | 0.0 | 0 | 0.0 |
| Abarán | 12964 | 35 | 270.0 | 7 | 54.0 | 1 | 7.7 | 6 | 46.3 | 0 | 0.0 |
| Águilas / Norte | 20849 | 16 | 76.7 | 0 | 0.0 | 0 | 0.0 | 0 | 0.0 | 0 | 0.0 |
| Águilas / Sur | 14519 | 20 | 137.8 | 1 | 6.9 | 1 | 6.9 | 0 | 0.0 | 0 | 0.0 |
| Alcantarilla / Casco | 18862 | 39 | 206.8 | 5 | 26.5 | 3 | 15.9 | 3 | 15.9 | 2 | 10.6 |
| Alcantarilla / Sangonera | 29395 | 85 | 289.2 | 19 | 64.6 | 14 | 47.6 | 13 | 44.2 | 3 | 10.2 |
| Alguazas | 9638 | 53 | 549.9 | 23 | 238.6 | 6 | 62.3 | 17 | 176.4 | 1 | 10.4 |
| Alhama de Murcia | 22077 | 60 | 271.8 | 21 | 95.1 | 9 | 40.8 | 8 | 36.2 | 1 | 4.5 |
| Archena | 24849 | 68 | 273.7 | 10 | 40.2 | 3 | 12.1 | 3 | 12.1 | 0 | 0.0 |
| Beniel | 11318 | 33 | 291.6 | 8 | 70.7 | 3 | 26.5 | 2 | 17.7 | 0 | 0.0 |
| Blanca | 6539 | 12 | 183.5 | 6 | 91.8 | 3 | 45.9 | 4 | 61.2 | 1 | 15.3 |
| Bullas | 11530 | 27 | 234.2 | 1 | 8.7 | 0 | 0.0 | 1 | 8.7 | 0 | 0.0 |
| Calasparra | 10555 | 69 | 653.7 | 3 | 28.4 | 3 | 28.4 | 3 | 28.4 | 1 | 9.5 |
| Caravaca | 21057 | 50 | 237.5 | 7 | 33.2 | 5 | 23.7 | 6 | 28.5 | 2 | 9.5 |
| Caravaca / Barranda | 4874 | 19 | 389.8 | 0 | 0.0 | 0 | 0.0 | 0 | 0.0 | 0 | 0.0 |
| Cartagena / Casco Antiguo | 18323 | 158 | 862.3 | 21 | 114.6 | 13 | 70.9 | 13 | 70.9 | 3 | 16.4 |
| Cartagena / Este | 25416 | 81 | 318.7 | 27 | 106.2 | 13 | 51.1 | 13 | 51.1 | 3 | 11.8 |
| Cartagena / Isaac Peral | 22732 | 95 | 417.9 | 29 | 127.6 | 10 | 44.0 | 6 | 26.4 | 3 | 13.2 |
| Cartagena / Los Barreros | 10446 | 14 | 134.0 | 4 | 38.3 | 4 | 38.3 | 1 | 9.6 | 0 | 0.0 |
| Cartagena / Los Dolores | 16357 | 65 | 397.4 | 25 | 152.8 | 6 | 36.7 | 17 | 103.9 | 2 | 12.2 |
| Cartagena / Mar Menor | 16711 | 31 | 185.5 | 3 | 18.0 | 0 | 0.0 | 0 | 0.0 | 0 | 0.0 |
| Cartagena / Molinos Marfagones | 15728 | 42 | 267.0 | 3 | 19.1 | 2 | 12.7 | 2 | 12.7 | 0 | 0.0 |
| Cartagena / Oeste | 21777 | 80 | 367.4 | 5 | 23.0 | 3 | 13.8 | 4 | 18.4 | 1 | 4.6 |
| Cartagena / Pozo Estrecho | 12780 | 31 | 242.6 | 2 | 15.6 | 1 | 7.8 | 2 | 15.6 | 0 | 0.0 |
| Cartagena / San Antón | 18738 | 47 | 250.8 | 14 | 74.7 | 11 | 58.7 | 11 | 58.7 | 5 | 26.7 |
| Cartagena / Santa Ana | 19191 | 25 | 130.3 | 5 | 26.1 | 2 | 10.4 | 2 | 10.4 | 1 | 5.2 |
| Cartagena / Santa Lucía | 10425 | 40 | 383.7 | 4 | 38.4 | 2 | 19.2 | 2 | 19.2 | 0 | 0.0 |
| Cartagena / La Manga | 6866 | 32 | 466.1 | 6 | 87.4 | 1 | 14.6 | 3 | 43.7 | 1 | 14.6 |
| Cehegín | 14606 | 31 | 212.2 | 2 | 13.7 | 0 | 0.0 | 2 | 13.7 | 0 | 0.0 |
| Ceutí | 11787 | 22 | 186.6 | 2 | 17.0 | 1 | 8.5 | 0 | 0.0 | 0 | 0.0 |
| Cieza / Este | 18503 | 46 | 248.6 | 7 | 37.8 | 3 | 16.2 | 4 | 21.6 | 0 | 0.0 |
| Cieza / Oeste | 16485 | 78 | 473.2 | 2 | 12.1 | 2 | 12.1 | 2 | 12.1 | 0 | 0.0 |
| Fortuna | 10112 | 29 | 286.8 | 4 | 39.6 | 1 | 9.9 | 3 | 29.7 | 1 | 9.9 |
| Fuente Álamo | 16583 | 27 | 162.8 | 11 | 66.3 | 7 | 42.2 | 7 | 42.2 | 1 | 6.0 |
| Jumilla | 25600 | 90 | 351.6 | 23 | 89.8 | 10 | 39.1 | 5 | 19.5 | 1 | 3.9 |
| La Unión | 20411 | 33 | 161.7 | 3 | 14.7 | 2 | 9.8 | 1 | 4.9 | 0 | 0.0 |
| Librilla | 21471 | 4 | 18.6 | 1 | 4.7 | 0 | 0.0 | 0 | 0.0 | 0 | 0.0 |
| Lorca / Centro | 5305 | 122 | 2299.7 | 46 | 867.1 | 23 | 433.6 | 26 | 490.1 | 5 | 94.3 |
| Lorca / La Paca | 18614 | 8 | 43.0 | 1 | 5.4 | 1 | 5.4 | 0 | 0.0 | 0 | 0.0 |
| Lorca / San Diego | 10024 | 147 | 1466.5 | 84 | 838.0 | 35 | 349.2 | 30 | 299.3 | 6 | 59.9 |
| Lorca / San José | 20480 | 122 | 595.7 | 53 | 258.8 | 21 | 102.5 | 33 | 161.1 | 5 | 24.4 |
| Lorca / Sutullena | 24876 | 30 | 120.6 | 19 | 76.4 | 10 | 40.2 | 11 | 44.2 | 2 | 8.0 |
| Lorca San Cristóbal | 3352 | 11 | 328.2 | 3 | 89.5 | 3 | 89.5 | 2 | 59.7 | 1 | 29.8 |
| Lorquí | 14506 | 17 | 117.2 | 0 | 0.0 | 0 | 0.0 | 0 | 0.0 | 0 | 0.0 |
| Los Alcázares | 7141 | 38 | 532.1 | 5 | 70.0 | 3 | 42.0 | 3 | 42.0 | 0 | 0.0 |
| Mazarrón | 16138 | 70 | 433.8 | 14 | 86.8 | 4 | 24.8 | 4 | 24.8 | 2 | 12.4 |
| Mazarrón / Puerto | 6936 | 117 | 1686.9 | 17 | 245.1 | 7 | 100.9 | 7 | 100.9 | 3 | 43.3 |



| Zona Básica Salud | Población | Casos | IA* | Casos PCR+ últ.14 días | | Casos PCR+ con FIS ult. 14 días | | Casos PCR+ últ. 7 días | | Casos PCR+ con FIS ult. 7 días | |
|--------------------------------|-----------|-------|--------|---------------------------|-------|------------------------------------|-------|---------------------------|-------|-----------------------------------|------|
| | | | | Casos | IA* | Casos | IA* | Casos | IA* | Casos | IA* |
| Molina / Este | 19343 | 40 | 206.8 | 2 | 10.3 | 1 | 5.2 | 1 | 5.2 | 1 | 5.2 |
| Molina / Norte | 28158 | 124 | 440.4 | 27 | 95.9 | 12 | 42.6 | 17 | 60.4 | 2 | 7.1 |
| Molina / Sur | 22005 | 119 | 540.8 | 23 | 104.5 | 14 | 63.6 | 14 | 63.6 | 4 | 18.2 |
| Moratalla | 21727 | 12 | 55.2 | 3 | 13.8 | 1 | 4.6 | 1 | 4.6 | 0 | 0.0 |
| Mula | 7668 | 63 | 821.6 | 24 | 313.0 | 5 | 65.2 | 14 | 182.6 | 3 | 39.1 |
| Murcia / Algezares | 24131 | 62 | 256.9 | 6 | 24.9 | 2 | 8.3 | 2 | 8.3 | 0 | 0.0 |
| Murcia / Aljucer | 12984 | 23 | 177.1 | 1 | 7.7 | 0 | 0.0 | 0 | 0.0 | 0 | 0.0 |
| Murcia / Alquerías | 7699 | 43 | 558.5 | 3 | 39.0 | 2 | 26.0 | 1 | 13.0 | 1 | 13.0 |
| Murcia / Barrio de El Carmen | 14611 | 119 | 814.5 | 53 | 362.7 | 28 | 191.6 | 19 | 130.0 | 7 | 47.9 |
| Murcia / Beniján | 16447 | 89 | 541.1 | 17 | 103.4 | 9 | 54.7 | 8 | 48.6 | 2 | 12.2 |
| Murcia / Cabezo de Torres | 28622 | 92 | 321.4 | 19 | 66.4 | 8 | 28.0 | 4 | 14.0 | 0 | 0.0 |
| Murcia / Campo de Cartagena | 21701 | 19 | 87.6 | 4 | 18.4 | 1 | 4.6 | 3 | 13.8 | 0 | 0.0 |
| Murcia / Centro | 11708 | 119 | 1016.4 | 11 | 94.0 | 4 | 34.2 | 3 | 25.6 | 2 | 17.1 |
| Murcia / El Palmar | 19640 | 73 | 371.7 | 11 | 56.0 | 7 | 35.6 | 7 | 35.6 | 4 | 20.4 |
| Murcia / El Ranero | 23889 | 48 | 200.9 | 8 | 33.5 | 5 | 20.9 | 1 | 4.2 | 0 | 0.0 |
| Murcia / Espinardo | 12534 | 104 | 829.7 | 17 | 135.6 | 10 | 79.8 | 10 | 79.8 | 4 | 31.9 |
| Murcia / Floridabanca | 26474 | 53 | 200.2 | 17 | 64.2 | 7 | 26.4 | 6 | 22.7 | 0 | 0.0 |
| Murcia / Infante Juan Manuel | 10748 | 72 | 669.9 | 25 | 232.6 | 17 | 158.2 | 15 | 139.6 | 1 | 9.3 |
| Murcia / La Alberca | 18164 | 181 | 996.5 | 17 | 93.6 | 7 | 38.5 | 8 | 44.0 | 3 | 16.5 |
| Murcia / La Ñora | 18920 | 31 | 163.8 | 7 | 37.0 | 5 | 26.4 | 5 | 26.4 | 0 | 0.0 |
| Murcia / Llano de Brujas | 13158 | 31 | 235.6 | 2 | 15.2 | 1 | 7.6 | 2 | 15.2 | 0 | 0.0 |
| Murcia / Monteagudo | 13119 | 61 | 465.0 | 5 | 38.1 | 2 | 15.2 | 2 | 15.2 | 0 | 0.0 |
| Murcia / Nonduermas | 14241 | 41 | 287.9 | 15 | 105.3 | 7 | 49.2 | 9 | 63.2 | 3 | 21.1 |
| Murcia / Puente Tocinos | 12785 | 88 | 688.3 | 24 | 187.7 | 12 | 93.9 | 6 | 46.9 | 0 | 0.0 |
| Murcia / San Andrés | 16655 | 163 | 978.7 | 35 | 210.1 | 20 | 120.1 | 14 | 84.1 | 7 | 42.0 |
| Murcia / Sangonera la Verde | 26777 | 38 | 141.9 | 14 | 52.3 | 8 | 29.9 | 7 | 26.1 | 2 | 7.5 |
| Murcia / Santa María de Gracia | 12296 | 69 | 561.2 | 6 | 48.8 | 3 | 24.4 | 5 | 40.7 | 2 | 16.3 |
| Murcia / Santiago El Mayor | 12406 | 97 | 781.9 | 34 | 274.1 | 14 | 112.8 | 12 | 96.7 | 4 | 32.2 |
| Murcia / Santiago y Zairaiche | 27142 | 24 | 88.4 | 6 | 22.1 | 6 | 22.1 | 2 | 7.4 | 2 | 7.4 |
| Murcia / Vista Alegre | 16613 | 142 | 854.8 | 14 | 84.3 | 13 | 78.3 | 11 | 66.2 | 5 | 30.1 |
| Murcia / Vistabella | 15916 | 69 | 433.5 | 14 | 88.0 | 9 | 56.5 | 8 | 50.3 | 3 | 18.8 |
| Murcia / Zarandona | 14864 | 31 | 208.6 | 6 | 40.4 | 4 | 26.9 | 3 | 20.2 | 0 | 0.0 |
| Puerto Lumbreras | 14195 | 37 | 260.7 | 12 | 84.5 | 5 | 35.2 | 2 | 14.1 | 0 | 0.0 |
| San Javier | 17879 | 45 | 251.7 | 2 | 11.2 | 1 | 5.6 | 1 | 5.6 | 0 | 0.0 |
| San Pedro del Pinatar | 30286 | 42 | 138.7 | 6 | 19.8 | 6 | 19.8 | 4 | 13.2 | 1 | 3.3 |
| Santomera | 25476 | 105 | 412.2 | 0 | 0.0 | 0 | 0.0 | 0 | 0.0 | 0 | 0.0 |
| Torre Pacheco / Este | 16206 | 57 | 351.7 | 13 | 80.2 | 2 | 12.3 | 7 | 43.2 | 0 | 0.0 |
| Torre Pacheco / Oeste | 18795 | 25 | 133.0 | 5 | 26.6 | 1 | 5.3 | 0 | 0.0 | 0 | 0.0 |
| Torres de Cotillas | 16881 | 53 | 314.0 | 11 | 65.2 | 4 | 23.7 | 3 | 17.8 | 0 | 0.0 |
| Totana / Norte | 18986 | 214 | 1127.1 | 45 | 237.0 | 7 | 36.9 | 15 | 79.0 | 0 | 0.0 |
| Totana / Sur | 14044 | 148 | 1053.8 | 16 | 113.9 | 3 | 21.4 | 5 | 35.6 | 0 | 0.0 |
| Yecla / Este | 18667 | 93 | 498.2 | 1 | 5.4 | 0 | 0.0 | 1 | 5.4 | 0 | 0.0 |
| Yecla Oeste | 15765 | 88 | 558.2 | 7 | 44.4 | 0 | 0.0 | 5 | 31.7 | 0 | 0.0 |

1: Con información epidemiológica completa FIS: fecha inicio síntomas *IA: Incidencia acumulada x10⁵ hab.

Fuente: Servicio de Epidemiología, Dirección General de Salud Pública y Adicciones